

Warning

Before use, verify that the product category and group as stated on the product label and in the installation instructions are appropriate for the area in which it is to be used.

1. System Overview

The system enables load to be monitored and displayed on both a PC and a remote handset. It comprises:

- One or more load measuring devices – this may be a tension link, a shackle or some other type of device capable of measuring load.
- A handset.
- Base station - run on a desktop or laptop.

2. Energising Devices

Fit the batteries supplied with the handset and the tension link. Note: Batteries must be of an approved type for hazardous area use.



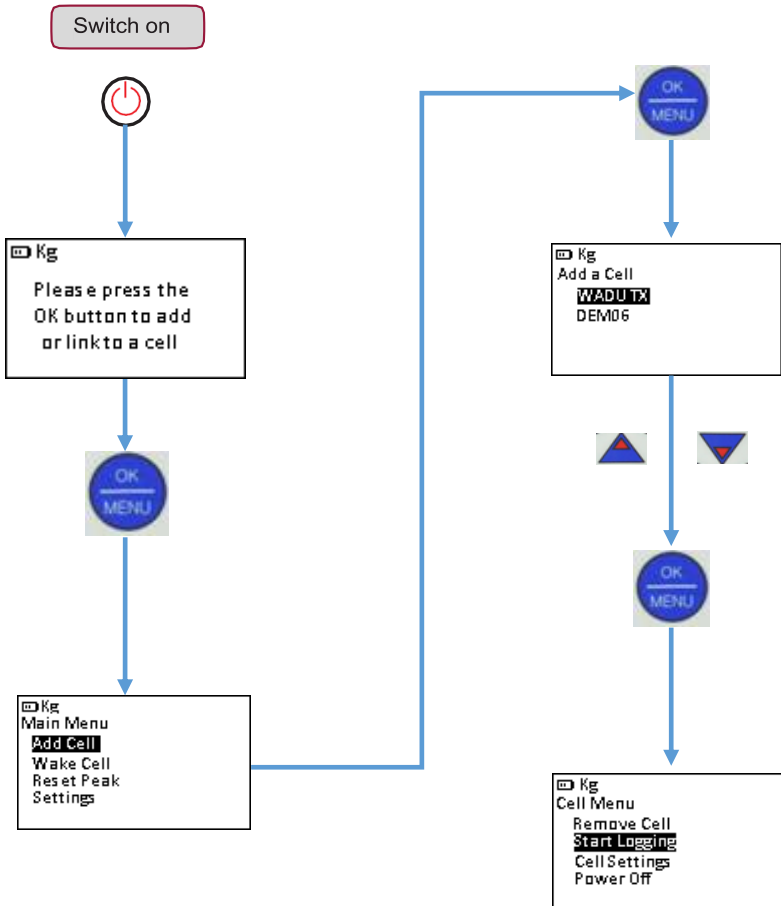
Figure 1.1 Handset AA



Figure 1-2 Tension link

Note. Figure 1-2 shows the battery cover for a tension link. The packaging will differ slightly in other applications, e.g. shackles, but all new devices will have a similar battery box.

3. Using the Handset / Display Unit



To rename the cell: Use the menu (select Cell and press OK) – see the User Manual for details.

Go to <http://www.strainstall.com/media/literature> to download a copy of the Smartload User Manual.

Note. Three versions of the manual are available according to area of use: Hazardous Zone 1, Zone 2 and Safe Area.

4. Base Station Setup

4.1 Install software

1. Go to the download web page

<http://www.scotload.com/getsmartload>

2. Select software by clicking on the SmartLoad base station link and Save

Scotload's proprietary, future-proof SmartLoad® base station software saves valuable operational time.

[SHOP ONLINE NOW](#)

Designed to automatically generate 'ready to share' charts for all logging events SmartLoad® base station simplifies data compilation. All software can be upgraded wirelessly from the base station eliminating the need to physically connect to load cells or handsets.

If you currently own a SmartLoad® product you can download the latest logging software using the link below:



[SmartLoad® base station V1.60](#)

3. Download

The SmartloadBaseStationV1.60 (1).zip download has completed.

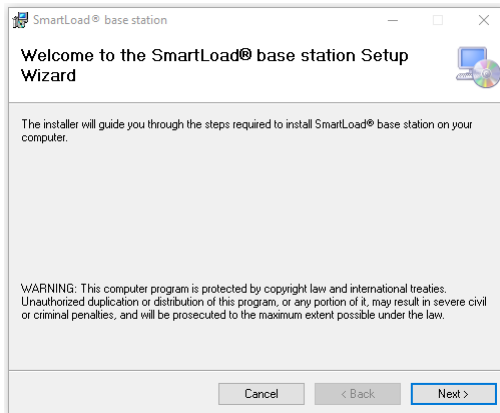
4. Start setup

Double click on the BaseStationSetup file to start installation

 BaseStationSetup	Windows Installer Package	5,718 KB
 setup	Application	193 KB

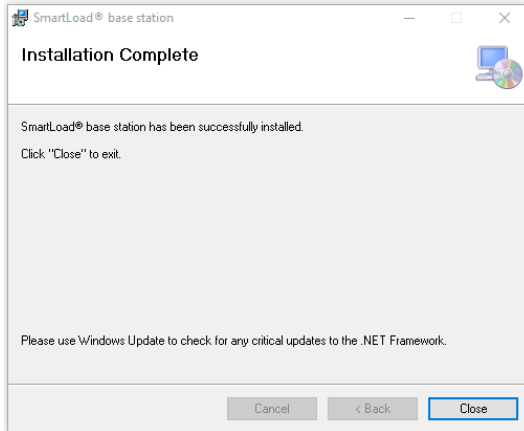
5. Install

Click Next and Agree to End-User Licence Agreement and start installation



SmartLoad Quick Start

6. Installation Complete



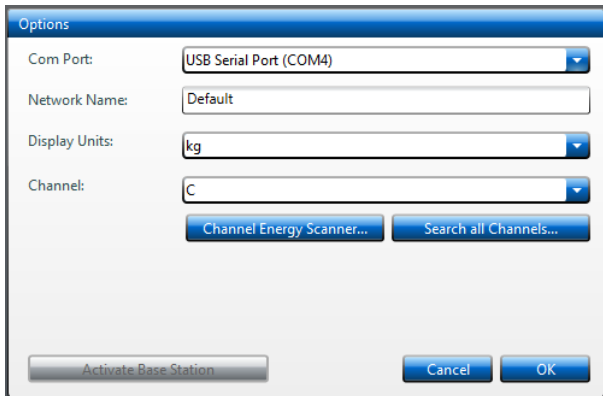
4.2 Run software

1. Insert dongle and start

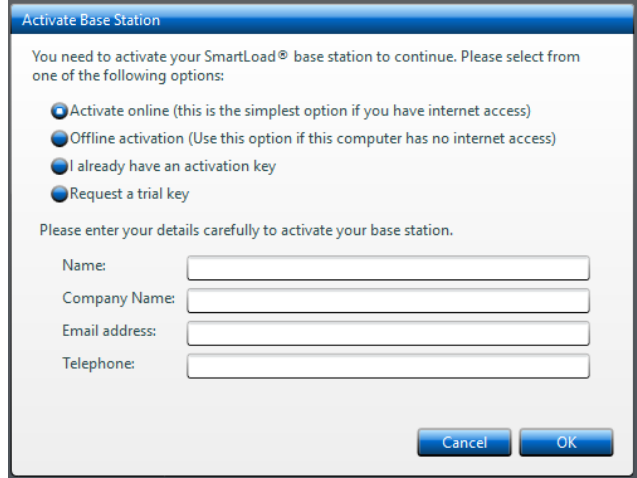
Click on SmartLoad desktop shortcut



2. Select Options



3. Complete activation



Activate Base Station

You need to activate your SmartLoad[®] base station to continue. Please select from one of the following options:

- Activate online (this is the simplest option if you have internet access)
- Offline activation (Use this option if this computer has no internet access)
- I already have an activation key
- Request a trial key

Please enter your details carefully to activate your base station.

Name:

Company Name:

Email address:

Telephone: